



MEDICAL HISTORY

During childhood

- Age 5: evidence of rickets in wrists and knees along with delayed skeletal maturation; sister and father with known history of X-linked hypophosphatemia (XLH)
 - Diagnosed with XLH based on clinical and biochemical findings and family history
 - Initiated oral calcitriol and phosphate
 - Renal ultrasound indicated nephrocalcinosis; serum phosphorus was 2.4 (reference range 2.5 to 4.5 mg/dL); alkaline phosphatase was 538 U/L (reference range 100 to 300 U/L)
- Age 7: radiographic evidence of rickets in lower limbs ([X-ray 1](#))
- Age 8: stiffness and bone pain documented in pediatric records
- Age 9 to 18: treatment for depression
- Age 15 to 18: underwent bilateral hip surgery due to bilateral impingements and tibial osteotomy
- No history of recombinant growth hormone use
- Fracture history includes stress fracture of right femur, right ankle fracture, and left wrist fracture

Transition to adult metabolic clinic, exam at age 25

- Previously cared for in the pediatric endocrine clinic
- Physical exam
 - Height, 4'11" (both mother and father, 5'2")
 - No evidence of scoliosis
- Reported stiffness, which made it difficult to get up from sitting positions or to stand for prolonged periods of time
- Reported disabling bone and muscle pain; ongoing symptoms of childhood rickets complicated by depression; history of opiate dependence
- Adherent to medical management with renal ultrasounds and 24-hour urine collections every 6 months

DIAGNOSIS AND INITIAL TREATMENT

- Confirmed XLH diagnosis
- Treatment: continue oral calcitriol and phosphate
- Referral to integrative medicine



At 7 years old: bilateral fraying of the metaphyses of the distal femurs; physeal widening

INDICATION

CRYSVITA® (burosumab-twza) is a fibroblast growth factor 23 (FGF23) blocking antibody indicated for the treatment of X-linked hypophosphatemia (XLH) in adult and pediatric patients 6 months of age and older.

Please see Important Safety Information on pages 3 and 4 and accompanying full Prescribing Information.

*The information for this case study was provided courtesy of Dr. Kathryn McCrystal Dahir, Professor of Medicine, Department of Endocrinology, Vanderbilt University Medical Center, Nashville. This case study represents a real patient and is intended to be illustrative, not a recommendation for treatment or management. Not all patients will respond the same to CRYSVITA treatment. Results may vary. This case study does not claim to represent typical results.

DISEASE PROGRESSION

Integrative medicine evaluation

- Greatest patient-reported health concern: lower extremity pain (bilateral hips, knees, and ankles), which was experienced since early teens
 - Due to pain, transitioned jobs from a bedside nurse position into an administrative desk position
- Reported anxiety and depression; expressed concerns with taking too many medications at a young age
 - Previously hospitalized for attempted suicide

X-ray evaluation at age 26 (X-ray 2)

- Bilateral calcaneal enthesophytes; left Achilles enthesophyte previously broken
- Small bilateral Haglund bumps with mild bilateral retrocalcaneal bursitis

Metabolic clinic follow-up evaluation at age 27

- Maintained adherence to prescribed XLH treatment; no change in dosage
- Reported recent root canal for an abscess

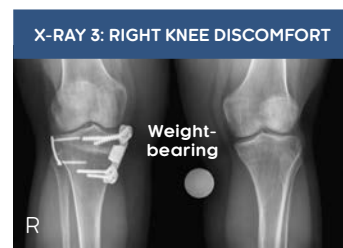
- Reported persistent pain
 - Recent Achilles tendon tear
 - Developed lower back pain
 - Developed pain in the anteromedial aspect of the right knee with prolonged walking, sit/stand transition, or using steps (X-ray 3)
- Referred to physical medicine and rehabilitation
- Laboratory findings (Table, below)
- Initiated CRYSVITA treatment

CRYSVITA treatment, 21 weeks

- Patient reported resolution of stiffness and a return to work
- Laboratory findings: tests improved (Table, below)
- Adverse reactions included mild injection site reactions (ISRs) and restless leg syndrome (RLS)
 - ISRs were treated with topical antihistamine medication
 - RLS resolved after 3 months



At 26 years old: bilateral calcaneal enthesophytes; previously broken left Achilles enthesophyte; small bilateral Haglund bumps with mild bilateral retrocalcaneal bursitis.



At 27 years old: significant discomfort in the anteromedial aspect of the right knee with use. Proximal tibial osteotomy performed when patient was a teenager.

LABORATORY TEST RESULTS

Test (reference range ^a unit)	Result (age)	
	Prior to CRYSVITA (27 years)	CRYSVITA 21 weeks (27 years)
Serum phosphorus (2.3-4.7 mg/dL)	1.2	3.1
1,25 (OH) ₂ (20-79 ng/mL)	31.4	73
25(OH)D (25-80 ng/mL)	36	30
BSAP (4.5-16.9 mcg/L)	21.3	19.2
PTH (16-88 pg/mL)	54	43
Creatinine (0.57-1.11 mg/dL)	-	0.73

1,25 (OH)₂, 1,25 dihydroxy vitamin D; 25(OH)D, 25-hydroxy vitamin D (calcifediol); BSAP, bone-specific alkaline phosphatase, also known as BAP; PTH, parathyroid hormone.
^aIndicates normal range, age, and gender matched. Note that normal range values may vary depending on reference dataset. The range in this table was provided by the treating physician.

SUMMARY

- At age 5, patient was diagnosed with XLH; was compliant with conventional therapy of oral phosphate and calcitriol
- XLH symptoms progressed from diagnosis: history of fractures, stiffness, pain, and impaired physical function
- Disease progression in adulthood was managed by multiple specialties including endocrinology, integrative medicine, and physical medicine and rehabilitation
- At age 27, patient initiated CRYSVITA; after 5 months demonstrated improvements in laboratory findings and joint stiffness
- Adverse reactions associated with CRYSVITA treatment included ISRs and RLS; ISRs were treated with topical antihistamine, and RLS resolved after 3 months

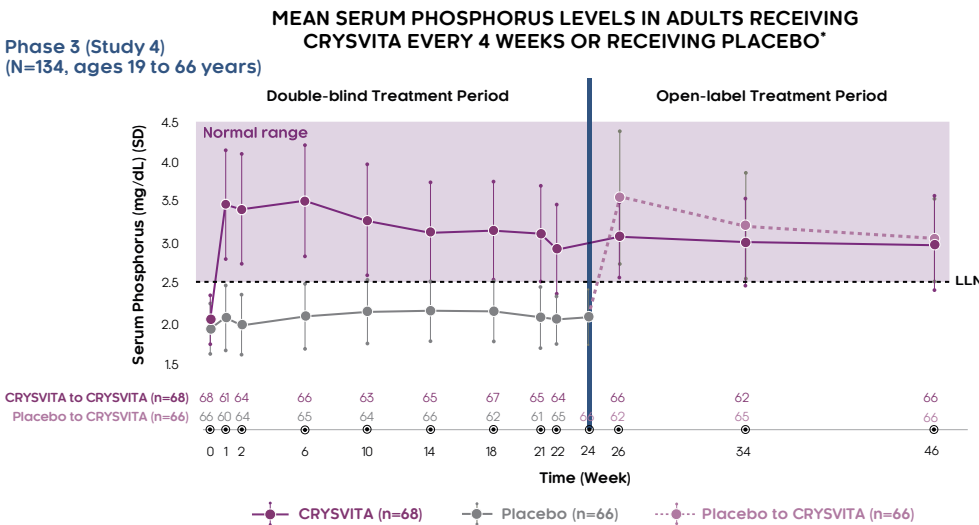
Please see Important Safety Information on pages 3 and 4 and accompanying full Prescribing Information.

CRYSVITA CLINICAL TRIALS RESULTS

CRYSVITA WAS EVALUATED IN TWO PHASE 3 CLINICAL STUDIES OF 148 ADULTS WITH XLH

- Phase 3 study (Study 4): 24 weeks, randomized, double-blind, placebo-controlled, followed by 24 weeks, open-label, during which all patients received CRYSVITA, N=134, 19 to 66 years old
 - One patient in the CRYSVITA group discontinued treatment during the 24-week placebo-controlled treatment period, and 7 patients discontinued CRYSVITA during the open-label treatment period
 - Baseline: 52% of patients had active fractures or pseudofractures; all had skeletal pain associated with XLH/osteomalacia
- Phase 3 study (Study 5): 48 weeks, open-label, single-arm, N=14, 25 to 52 years old
 - No patients discontinued
- In both studies, oral phosphate and active vitamin D analogs were discontinued prior to enrollment

CRYSVITA LED TO INCREASED AND SUSTAINED SERUM PHOSPHORUS LEVELS WITHIN THE NORMAL RANGE



A significantly higher proportion of patients, 94% (64/68), achieved normalized serum phosphorus with CRYSVITA, compared with 8% (5/66) with placebo (95% CI: placebo [3.3 to 16.5]; CRYSVITA [85.8 to 97.7], $P < 0.0001$). Serum phosphorus was maintained with continued CRYSVITA treatment through Week 48.

SD, standard deviation.

*Serum phosphorus level (mg/dL) (mean \pm the SD). The dotted line represents lower limit of normal (LLN, 2.5 mg/dL).

Normal levels range from 2.5 to 4.5 mg/dL. Note that the normal levels vary by age and gender, and ranges may vary by testing laboratory. At baseline mean (SD) serum phosphorus levels were 2.0 (0.30) and 1.9 (0.32) mg/dL for the CRYSVITA and placebo groups, respectively. Mean serum phosphorus levels across midpoints of dose intervals (2 weeks post-dose) were 3.2 (0.53) and 2.1 (0.30) mg/dL for the CRYSVITA and placebo groups, respectively.

CRYSVITA EVERY 4 WEEKS DEMONSTRATED HEALING OF OSTEOMALACIA

Healing of osteomalacia was observed with CRYSVITA (Study 5, N=14) after 48 weeks of treatment:

- Osteoid volume/bone volume decreased in 10 patients from a mean score of 26% at baseline to 11%, **a change of -57%**
- Osteoid thickness declined in 11 patients from a mean of 17 μ m to 12 μ m, **a change of -33%**
- Mineralization lag time declined in 6 patients from a mean of 594 days to 156 days, **a mean change of -74%**

IMPORTANT SAFETY INFORMATION

CONTRAINDICATIONS

- With oral phosphate and/or active vitamin D analogs (e.g., calcitriol, paricalcitol, doxercalciferol, calcifediol).
- When serum phosphorus is within or above the normal range for age.
- In patients with severe renal impairment or end stage renal disease.

WARNINGS AND PRECAUTIONS

Hypersensitivity

- Discontinue CRYSVITA if serious hypersensitivity reactions occur and initiate appropriate medical treatment.

Hyperphosphatemia and Risk of Nephrocalcinosis

- For patients already taking CRYSVITA, dose interruption and/or dose reduction may be required based on a patient's serum phosphorus levels.

Injection Site Reactions

- Discontinue CRYSVITA if severe injection site reactions occur and administer appropriate medical treatment.

Please see Important Safety Information on pages 3 and 4 and accompanying full Prescribing Information.

CRYSVITA CLINICAL TRIALS RESULTS (continued)

CRYSVITA EVERY 4 WEEKS HEALED FRACTURES, INCLUDING IN PATIENTS WHO SWITCHED FROM PLACEBO

CRYSVITA demonstrated a higher rate of complete fracture healing compared with placebo: 43% (28/65) vs 8% (7/91) total fracture healing from baseline to Week 24 (Study 4, N=134).

- Active fracture healing: 50% (7/14) in the CRYSVITA group vs 0% (0/7) in the placebo group
- Active pseudofracture healing: 41% (21/51) in the CRYSVITA group vs 9% (7/78) in the placebo group

During the open-label treatment period, patients who continued receiving CRYSVITA showed continued healing of fractures at Week 48:

- Active fractures: 57% (8/14) in the CRYSVITA group and 46% (6/13) in the placebo-to-CRYSVITA group
- Active pseudofractures: 65% (33/51) in the CRYSVITA group and 33% (26/78) in the placebo-to-CRYSVITA group

Osteomalacia-related fractures were defined as atraumatic lucencies extending across both bone cortices and pseudofractures were defined as atraumatic lucencies extending across one cortex.

CRYSVITA EVERY 4 WEEKS IMPACTED PATIENT-REPORTED OUTCOMES

CRYSVITA demonstrated a mean improvement in the joint stiffness severity score (-7.9), compared with placebo (+0.3), from baseline to Week 24 (Study 4, N=134). No significant difference between CRYSVITA and placebo was demonstrated in patient-reported pain intensity or physical function score.

CRYSVITA ADVERSE REACTIONS IN ADULT PATIENTS 20 TO 63 YEARS OF AGE

Adverse reactions (>5% and in at least 2 patients more than placebo) in adult patients were: back pain, headache, tooth infection, restless leg syndrome, vitamin D decreased, dizziness, constipation, muscle spasms, and blood phosphorus increased.

IMPORTANT SAFETY INFORMATION (continued)

ADVERSE REACTIONS

Pediatric Patients

- Adverse reactions reported in 10% or more of CRYSVITA-treated pediatric XLH patients across all studies are: pyrexia, injection site reaction, cough, vomiting, pain in extremity, headache, tooth abscess, dental caries, diarrhea, vitamin D decreased, toothache, constipation, myalgia, rash, dizziness and nausea.

Adult Patients

- Adverse reactions reported in more than 5% of CRYSVITA-treated adult XLH patients and in at least 2 patients more than placebo in one study are: back pain, headache, tooth infection, restless leg syndrome, vitamin D decreased, dizziness, constipation, muscle spasms, and blood phosphorus increased.
- Spinal stenosis is prevalent in adults with XLH, and spinal cord compression has been reported. It is unknown if CRYSVITA therapy exacerbates spinal stenosis or spinal cord compression.

USE IN SPECIFIC POPULATIONS

- There are no available data on CRYSVITA use in pregnant women to inform a drug-associated risk of adverse developmental outcomes. Serum phosphorus levels should be monitored throughout pregnancy. Report pregnancies to the Kyowa Kirin, Inc. Adverse Event reporting line at **1-888-756-8657**.
- There is no information regarding the presence of CRYSVITA in human milk or the effects of CRYSVITA on milk production or the breastfed infant.

PATIENT COUNSELING INFORMATION

- Advise patients not to use any oral phosphate and/or active vitamin D analog products.
- Instruct patients to contact their physician if hypersensitivity reactions, injection site reactions, and restless leg syndrome induction or worsening of symptoms occur.

You may report side effects to the FDA at **(800) FDA-1088** or www.fda.gov/medwatch. You may also report side effects to Kyowa Kirin, Inc. at **1-888-756-8657**.

Please see accompanying full Prescribing Information for a complete discussion of the risks associated with CRYSVITA.

REFERENCE:

1. CRYSVITA (burosumab-twza) US Prescribing Information; September 2019.

HIGHLIGHTS OF PRESCRIBING INFORMATION

These highlights do not include all the information needed to use CRYSVITA safely and effectively. See full prescribing information for CRYSVITA.

CRYSVITA® (burosumab-twza) injection, for subcutaneous use
Initial U.S. Approval: 2018

RECENT MAJOR CHANGES

Indications and Usage (1) 9/2019
Dosage and Administration, 25-Hydroxy Vitamin D Supplementation (2.5) 9/2019

INDICATIONS AND USAGE

CRYSVITA is a fibroblast growth factor 23 (FGF23) blocking antibody indicated for the treatment of X-linked hypophosphatemia (XLH) in adult and pediatric patients 6 months of age and older. (1)

DOSAGE AND ADMINISTRATION

For subcutaneous use only (2)

- **Pediatric XLH (6 months and older):**
 - For patients who weigh less than 10 kg, starting dose regimen is 1 mg/kg of body weight rounded to the nearest 1 mg, administered every two weeks (2.2)
 - For patients who weigh more than 10 kg, starting dose regimen is 0.8 mg/kg of body weight rounded to the nearest 10 mg, administered every two weeks. The minimum starting dose is 10 mg up to a maximum dose of 90 mg. (2.2)Dose may be increased up to approximately 2 mg/kg (maximum 90 mg), administered every two weeks to achieve normal serum phosphorus. (2.2)
- **Adult XLH:** Dose regimen is 1 mg/kg body weight rounded to the nearest 10 mg up to a maximum dose of 90 mg administered every four weeks. (2.3)

DOSAGE FORMS AND STRENGTHS

Injection: 10 mg/mL, 20 mg/mL, or 30 mg/mL in a single-dose vial (3)

CONTRAINDICATIONS

- With oral phosphate and/or active vitamin D analogs. (4)

- When serum phosphorus is within or above the normal range for age. (4)
- In patients with severe renal impairment or end stage renal disease. (4)

WARNINGS AND PRECAUTIONS

- **Hypersensitivity:** Discontinue CRYSVITA if serious hypersensitivity reactions occur and initiate appropriate medical treatment. (5.1)
- **Hyperphosphatemia and Risk of Nephrocalcinosis:** For patients already taking CRYSVITA, dose interruption and/or dose reduction may be required based on a patient's serum phosphorus levels. (5.2, 6.1)
- **Injection Site Reactions:** Administration of CRYSVITA may result in local injection site reactions. Discontinue CRYSVITA if severe injection site reactions occur and administer appropriate medical treatment. (5.3, 6.1)

ADVERSE REACTIONS

Most common adverse reactions ($\geq 25\%$ in the CRYSVITA group and $>$ Active Control) in pediatric XLH patients are: pyrexia, injection site reaction, cough, vomiting, pain in extremity, headache, tooth abscess, dental caries. (6.1)

Most common adverse reactions ($>5\%$ and in at least 2 patients more than placebo) in adult XLH patients are: back pain, headache, tooth infection, restless leg syndrome, vitamin D decreased, dizziness, constipation, muscle spasms, blood phosphorus increased. (6.1)

To report SUSPECTED ADVERSE REACTIONS, contact Kyowa Kirin, Inc. at 1-888-756-8657 or FDA at 1-800-FDA-1088 or www.fda.gov/medwatch.

See 17 for PATIENT COUNSELING INFORMATION

Revised: 9/2019

FULL PRESCRIBING INFORMATION: CONTENTS*

1 INDICATIONS AND USAGE

2 DOSAGE AND ADMINISTRATION

- 2.1 Important Dosage and Administration Information
- 2.2 Pediatric Patients with X-linked Hypophosphatemia (6 months to less than 18 years of age)
- 2.3 Adult Patients with X-linked Hypophosphatemia (18 years of age and older)
- 2.4 Missed Dose
- 2.5 25-Hydroxy Vitamin D Supplementation
- 2.6 General Considerations for Subcutaneous Administration

3 DOSAGE FORMS AND STRENGTHS

4 CONTRAINDICATIONS

5 WARNINGS AND PRECAUTIONS

- 5.1 Hypersensitivity
- 5.2 Hyperphosphatemia and Risk of Nephrocalcinosis
- 5.3 Injection Site Reactions

6 ADVERSE REACTIONS

- 6.1 Clinical Trials Experience
- 6.2 Immunogenicity

7 DRUG INTERACTIONS

- 7.1 Oral Phosphate and Active Vitamin D Analogs

8 USE IN SPECIFIC POPULATIONS

- 8.1 Pregnancy
- 8.2 Lactation
- 8.4 Pediatric Use
- 8.5 Geriatric Use
- 8.6 Renal Impairment

10 OVERDOSAGE

11 DESCRIPTION

12 CLINICAL PHARMACOLOGY

- 12.1 Mechanism of Action
- 12.2 Pharmacodynamics
- 12.3 Pharmacokinetics

13 NONCLINICAL TOXICOLOGY

- 13.1 Carcinogenesis, Mutagenesis, Impairment of Fertility
- 13.2 Animal Toxicology and/or Pharmacology

14 CLINICAL STUDIES

- 14.1 Pediatric X-linked Hypophosphatemia
- 14.2 Adult X-linked Hypophosphatemia

16 HOW SUPPLIED/STORAGE AND HANDLING

17 PATIENT COUNSELING INFORMATION

* Sections or subsections omitted from the full prescribing information are not listed.

FULL PRESCRIBING INFORMATION

1 INDICATIONS AND USAGE

CRYSVITA is indicated for the treatment of X-linked hypophosphatemia (XLH) in adult and pediatric patients 6 months of age and older.

2 DOSAGE AND ADMINISTRATION

2.1 Important Dosage and Administration Information

Discontinue oral phosphate and/or active vitamin D analogs (e.g. calcitriol, paricalcitol, doxercalciferol, calcifediol) 1 week prior to initiation of treatment [see *Contraindications (4)*].

Fasting serum phosphorus concentration should be below the reference range for age prior to initiation of treatment [see *Contraindications (4)*].

CRYSVITA is administered by subcutaneous injection and should be administered by a healthcare provider.

The maximum volume of CRYSVITA per injection is 1.5 mL. If multiple injections are required, administer at different injection sites.

2.2 Pediatric Patients with X-linked Hypophosphatemia (6 months to less than 18 years of age)

For patients who weigh less than 10 kg, the recommended starting dose is 1 mg/kg of body weight, rounded to the nearest 1 mg, administered every two weeks.

For patients who weigh 10 kg and greater, the recommended starting dose regimen is 0.8 mg/kg of body weight, rounded to the nearest 10 mg, administered every two weeks. The minimum starting dose is 10 mg up to a maximum dose of 90 mg.

After initiation of treatment with CRYSVITA, measure fasting serum phosphorus every 4 weeks for the first 3 months of treatment, and thereafter as appropriate. If serum phosphorus is above the lower limit of the reference range for age and below 5 mg/dL, continue treatment with the same dose. Follow dose adjustment schedule below to maintain serum phosphorus within the reference range for age.

Dose Adjustment

Reassess fasting serum phosphorus level 4 weeks after dose adjustment.

Do not adjust CRYSVITA more frequently than every 4 weeks.

Dose Increase:

For patients who weigh less than 10 kg, if serum phosphorus is below the reference range for age, the dose may be increased to 1.5 mg/kg, rounded to the nearest 1 mg, administered every two weeks. If additional dose increases are needed, the dose may be increased to the maximum dose of 2 mg/kg, rounded to the nearest 1 mg, administered every two weeks.

For patients who weigh 10 kg or greater, if serum phosphorus is below the reference range for age, the dose may be increased stepwise up to approximately 2 mg/kg, administered every two weeks (maximum dose of 90 mg) according to the dosing schedule shown in [Table 1](#).

Table 1: Pediatric Dose Schedule for Stepwise Dose Increase for Patients Weighing 10 kg or More

Body Weight (kg)	Starting Dose (mg)	First Dose Increase to (mg)	Second Dose Increase to (mg)
10 – 14	10	15	20
15 – 18	10	20	30
19 – 31	20	30	40
32 – 43	30	40	60
44 – 56	40	60	80
57 – 68	50	70	90
69 – 80	60	90	90
81 – 93	70	90	90
94 – 105	80	90	90
106 and greater	90	90	90

Dose Decrease:

If serum phosphorus is above 5 mg/dL, withhold the next dose and reassess the serum phosphorus level in 4 weeks. The patient must have serum phosphorus below the reference range for age to reinitiate CRYSVITA. Once serum phosphorus is below the reference range for age, treatment may be restarted.

For patients who weigh less than 10 kg, restart CRYSVITA at 0.5 mg/kg of body weight, rounded to the nearest 1 mg, administered every two weeks. For patients who weigh 10 kg or more, restart CRYSVITA according to the dose schedule shown in [Table 2](#).

Table 2: Pediatric Dose Schedule for Re-Initiation of Therapy for Patients Weighing 10 kg or More

Previous Dose (mg)	Re-Initiation Dose (mg)
10	5
15	10
20	10
30	10
40	20
50	20
60	30
70	30
80	40
90	40

After a dose decrease, reassess serum phosphorus level 4 weeks after the dose adjustment. If the level remains below the reference range for age after the re-initiation dose, the dose can be adjusted as outlined under Dose Increase.

2.3 Adult Patients with X-linked Hypophosphatemia (18 years of age and older)

The recommended dose regimen in adults is 1 mg/kg body weight, rounded to the nearest 10 mg up to a maximum dose of 90 mg, administered every four weeks.

After initiation of treatment with CRYSVITA, assess fasting serum phosphorus on a monthly basis, measured 2 weeks post-dose, for the first 3 months of treatment, and thereafter as appropriate. If serum phosphorus is within the normal range, continue with the same dose.

Dose Decrease

Reassess fasting serum phosphorus level 2 weeks after dose adjustment.

Do not adjust CRYSVITA more frequently than every 4 weeks.

If serum phosphorus is above the normal range, withhold the next dose and reassess the serum phosphorus level after 4 weeks. The patient must have serum phosphorus below the normal range to be able to reinitiate CRYSVITA. Once serum phosphorus is below the normal range, treatment may be restarted at approximately half the initial starting dose up to a maximum dose of 40 mg every 4 weeks according to the dose schedule shown in [Table 3](#). Reassess serum phosphorus 2 weeks after any change in dose.

Table 3: Adult Dose Schedule for Re-Initiation of Therapy

Previous Dose (mg)	Re-Initiation Dose (mg)
40	20
50	20
60	30
70	30
80 and greater	40

2.4 Missed Dose

If a patient misses a dose, resume CRYSVITA as soon as possible at the prescribed dose. To avoid missed doses, treatments may be administered 3 days either side of the scheduled treatment date.

2.5 25-Hydroxy Vitamin D Supplementation

Monitor 25-hydroxy vitamin D levels. Supplement with cholecalciferol or ergocalciferol to maintain 25-hydroxy vitamin D levels in the normal range for age. Do not administer active Vitamin D analogs during CRYSVITA treatment [*see Contraindications (4)*].

2.6 General Considerations for Subcutaneous Administration

Injection sites should be rotated with each injection administered at a different anatomic location (upper arms, upper thighs, buttocks, or any quadrant of abdomen) than the previous injection. Do not inject into moles, scars, or areas where the skin is tender, bruised, red, hard, or not intact. If a given dose on a dosing day requires multiple vials of CRYSVITA, contents from two vials can be combined for injection. The maximum volume of CRYSVITA per injection is 1.5 mL. If multiple injections are required on a given dosing day, administer at different injection sites. Monitor for signs of reactions [*see Warnings and Precautions (5.3)*].

Visually inspect CRYSVITA for particulate matter and discoloration prior to administration. CRYSVITA is a sterile, preservative-free, clear to slightly opalescent and colorless to pale brown-yellow solution for subcutaneous injection. Do not use if the solution is discolored or cloudy or if the solution contains any particles or foreign particulate matter.

3 DOSAGE FORMS AND STRENGTHS

Injection: 10 mg/mL, 20 mg/mL, or 30 mg/mL clear to slightly opalescent and colorless to pale brown-yellow solution in a single-dose vial.

4 CONTRAINDICATIONS

CRYSVITA is contraindicated:

- In concomitant use with oral phosphate and/or active vitamin D analogs (e.g. calcitriol, paricalcitol, doxercalciferol, calcifediol) due to the risk of hyperphosphatemia [see *Warnings and Precautions (5.2) and Drug Interactions (7.1)*].
- When the serum phosphorus is within or above the normal range for age [see *Warnings and Precautions (5.2)*].
- In patients with severe renal impairment or end stage renal disease because these conditions are associated with abnormal mineral metabolism [see *Use In Specific Population (8.6)*].

5 WARNINGS AND PRECAUTIONS

5.1 Hypersensitivity

Hypersensitivity reactions (e.g. rash, urticaria) have been reported in patients with CRYSVITA. Discontinue CRYSVITA if serious hypersensitivity reactions occur and initiate appropriate medical treatment [see *Adverse Reactions (6.1)*].

5.2 Hyperphosphatemia and Risk of Nephrocalcinosis

Increases in serum phosphorus to above the upper limit of normal may be associated with an increased risk of nephrocalcinosis. For patients already taking CRYSVITA, dose interruption and/or dose reduction may be required based on a patient's serum phosphorus levels [see *Dosage and Administration (2) and Adverse Reactions (6.1)*].

5.3 Injection Site Reactions

Administration of CRYSVITA may result in local injection site reactions. Discontinue CRYSVITA if severe injection site reactions occur and administer appropriate medical treatment [see *Adverse Reactions (6.1)*].

6 ADVERSE REACTIONS

The following adverse reactions are described below and elsewhere in the labeling:

- Hypersensitivity [see *Warnings and Precautions (5.1)*]
- Hyperphosphatemia and Risk of Nephrocalcinosis [see *Warnings and Precautions (5.2)*]
- Injection Site Reactions [see *Warnings and Precautions (5.3)*]

6.1 Clinical Trials Experience

Because clinical trials are conducted under widely varying conditions, adverse reaction rates observed in the clinical trials of a drug cannot be directly compared to rates in the clinical trials of another drug and may not reflect the rates observed in practice.

Adverse Reactions in Pediatric Patients with XLH

CRYSVITA was studied in three pediatric XLH studies. Study 1 is a randomized, open-label phase 3 study in XLH patients ages 1 to 12 years, who were randomized to treatment with CRYSVITA or treatment with active control of oral phosphate and active vitamin D (CRYSVITA N = 29, Active Control N = 32). Study 2 is an open-label phase 2 study in XLH patients ages 5 to 12 years (N = 52). Study 3 is an open-label phase 2 study in XLH patients ages 1 to less than 5 years (N = 13). Overall, the patient population was 1-12 years (mean age 7.0 years), 49% male, and 88% white.

In Study 1, patients randomized to CRYSVITA received a mean dose of approximately 0.90 mg/kg (range 0.8-1.2 mg/kg) every 2 weeks. All patients in this group and the active control group completed 64 weeks of treatment.

Adverse reactions occurring in $\geq 10\%$ of subjects in the CRYSVITA group, with higher frequency than in the subjects in the active control group, through the 64-week treatment period in Study 1 are shown in [Table 4](#).

Table 4: Adverse Reactions Reported in 10% or More of CRYSVITA-Treated Pediatric Patients and with Higher Frequency Than the Active Control Group in Study 1

Adverse Reaction	CRYSVITA (N=29) n (%)	Active Control (N=32) n (%)
Pyrexia	16 (55)	6 (19)
Injection site reaction ¹	15 (52)	0 (0)
Cough ²	15 (52)	6 (19)
Vomiting	12 (41)	8 (25)
Pain in extremity	11 (38)	10 (31)
Headache	10 (34)	6 (19)
Tooth abscess ³	10 (34)	4 (13)
Dental caries	9 (31)	2 (6)
Diarrhea	7 (24)	2 (6)
Vitamin D decreased ⁴	7 (24)	1 (3)
Constipation	5 (17)	0 (0)
Rash ⁵	4 (14)	2 (6)
Nausea	3 (10)	1 (3)

n = number of patients with an event; N = total number of patients who received at least one dose of CRYSVITA or active control

¹ Injection site reaction includes: injection site reaction, injection site erythema, injection site pruritus, injection site swelling, injection site pain, injection site rash, injection site bruising, injection site discoloration, injection site discomfort, injection site hematoma, injection site hemorrhage, injection site induration, injection site macule, and injection site urticaria

² Cough includes: cough and productive cough

³ Tooth abscess includes: tooth abscess, tooth infection, toothache

⁴ Vitamin D decreased includes: vitamin D deficiency, blood 25-hydroxycholecalciferol decreased, and vitamin D decreased

⁵ Rash includes: rash, rash pruritic, rash maculopapular, rash erythematous, rash generalized and rash pustular

In Study 2, 26 of the patients received CRYSVITA at a mean dose of 1.05 mg/kg (range 0.4 – 2.0 mg/kg) every 2 weeks at Week 64; the other 26 patients received CRYSVITA every 4 weeks. The mean duration of exposure in Study 2 was 124 weeks. In Study 3, patients received CRYSVITA at a mean dose of 0.90 mg/kg (range 0.8-1.2 mg/kg) every 2 weeks at Week 40. The mean duration of exposure in Study 3 was 45 weeks.

Adverse reactions occurring in more than 10% of CRYSVITA-treated patients from Studies 2 and 3 are shown in [Table 5](#).

Table 5: Adverse Reactions Reported in More Than 10% of Pediatric Patients Receiving CRYSVITA in Studies 2 and 3

Adverse Reaction	Study 2 (N=52) n (%)	Study 3 (N=13) n (%)	Overall (N=65) n (%)
Headache	38 (73)	1 (8)	39 (60)
Injection site reaction ¹	35 (67)	3 (23)	38 (59)
Vomiting	25 (48)	6 (46)	31 (48)
Pyrexia	23 (44)	8 (62)	31 (48)
Pain in extremity	24 (46)	3 (23)	27 (42)
Vitamin D decreased ²	19 (37)	2 (15)	21 (32)
Rash ³	14 (27)	1 (8)	15 (23)
Toothache	12 (23)	2 (15)	14 (22)
Myalgia	9 (17)	1 (8)	10 (15)
Tooth abscess	8 (15)	3 (23)	11 (17)
Dizziness ⁴	8 (15)	0 (0)	8 (12)

n = number of patients with an event; N = total number of patients who received at least one dose of CRYSVITA

¹ Injection site reaction includes: injection site reaction, injection site erythema, injection site pruritus, injection site swelling, injection site pain, injection site rash, injection site bruising, injection site discoloration, injection site discomfort, injection site hematoma, injection site hemorrhage, injection site induration, injection site macule, and injection site urticaria

² Vitamin D decreased includes: vitamin D deficiency, blood 25-hydroxycholecalciferol decreased, and vitamin D decreased

³ Rash includes: rash, rash pruritic, rash maculopapular, and rash pustular

⁴ Dizziness includes: dizziness, and dizziness exertional

Hypersensitivity Reactions

In Study 1 (N=29 for CRYSVITA arm), the most frequent hypersensitivity reactions were rash (10%), injection site rash (10%) and injection site urticaria (7%). In Studies 2 and 3 (N=65), the most frequent hypersensitivity reactions were rash (22%), injection site rash (6%), and urticaria (5%).

Hyperphosphatemia

In pediatric studies, no events of hyperphosphatemia were reported.

Injection Site Reactions (ISR)

In Study 1 (N=29 for CRYSVITA arm), 52% of the patients had a local injection site reaction (e.g. injection site urticaria, erythema, rash, swelling, bruising, pain, pruritus, and hematoma) at the site of CRYSVITA injection. In Studies 2 and 3 (N=65), approximately 58% of the patients had a local injection site reaction at the site of CRYSVITA injection. Injection site reactions were generally mild in severity, occurred within 1 day of injection, lasted approximately 1 to 3 days, required no treatment, and resolved in almost all instances.

Adverse Reactions in Adult Patients with XLH

The safety of CRYSVITA in adult patients with XLH was demonstrated in a randomized, double-blind, placebo-controlled study (Study 4) of 134 patients, age 20-63 years (mean age 41 years), of whom most were white/Caucasian (81%) and female (65%). A total of 68 and 66 patients received at least one dose of CRYSVITA or placebo, respectively. The mean dose of CRYSVITA was 0.95 mg/kg (range 0.3 – 1.2 mg/kg) subcutaneously every 4 weeks. Adverse reactions reported in more than 5% of CRYSVITA-treated patients and 2 patients or more than with placebo from the 24-week placebo-controlled portion of Study 4 are shown in Table 6.

Table 6: Adverse Reactions Occurring in More Than 5% of CRYSVITA-Treated Adult Patients and in at Least 2 Patients More Than with Placebo in the 24-Week Placebo-Controlled Period of Study 4

Adverse Reaction	CRYSVITA (N=68) n (%)	Placebo (N=66) n (%)
Back pain	10 (15)	6 (9)
Headache ¹	9 (13)	6 (9)
Tooth infection ²	9 (13)	6 (9)
Restless legs syndrome	8 (12)	5 (8)
Vitamin D decreased ³	8 (12)	3 (5)
Dizziness	7 (10)	4 (6)
Muscle spasms	5 (7)	2 (3)
Constipation	6 (9)	0 (0)
Blood phosphorus increased ⁴	4 (6)	0 (0)

n = number of patients with an event; N = total number of patients who received at least one dose of CRYSVITA or placebo

¹Headache includes: headache, and head discomfort

²Tooth infection includes: tooth abscess, and tooth infection

³Vitamin D decreased includes: vitamin D deficiency, blood 25-hydroxycholecalciferol decreased, and vitamin D decreased

⁴Blood phosphorus increased includes: blood phosphorus increased, and hyperphosphatemia

The 24-week placebo controlled study was followed by a 24-week open-label treatment period in which all patients received CRYSVITA subcutaneously every 4 weeks. No new adverse reactions were identified in the open-label extension period.

Hypersensitivity Reactions

In the double-blind period of Study 4, approximately 6% of patients in both the CRYSVITA and placebo treatment groups experienced a hypersensitivity event. The events were mild or moderate and did not require discontinuation.

Hyperphosphatemia

In the double-blind period of Study 4, 7% of patients in the CRYSVITA treatment group experienced hyperphosphatemia meeting the protocol-specified criteria for dose reduction (either a single serum phosphorus greater than 5.0 mg/dL or serum phosphorus greater than 4.5 mg/dL [the upper limit of normal] on two occasions). The hyperphosphatemia was managed with dose reduction. The dose for all patients meeting the protocol-specified criteria was reduced 50 percent. A single patient required a second dose reduction for continued hyperphosphatemia.

Injection Site Reactions (ISR)

In the double-blind period of Study 4, approximately 12% of patients in both the CRYSVITA and placebo treatment groups had a local reaction (e.g. injection site reaction, erythema, rash, bruising, pain, pruritus, and hematoma) at the site of the injection. Injection site reactions were generally mild in severity, occurred within 1 day of injection, lasted approximately 1 to 3 days, required no treatment, and resolved in almost all instances.

Restless Leg Syndrome (RLS)

In the double-blind period of Study 4, approximately 12% of the CRYSVITA treatment group had worsening of baseline restless leg syndrome (RLS) or new onset RLS of mild to moderate severity; these events did not lead to dose discontinuation. Nonserious RLS has also been reported in other repeat dose adult XLH studies; in one case, worsening baseline RLS led to drug discontinuation and subsequent resolution of the event.

Spinal Stenosis

Spinal stenosis is prevalent in adults with XLH and spinal cord compression has been reported. In the CRYSVITA phase 2 and phase 3 studies of adults with XLH (total N=176), a total of 7 patients underwent spinal surgery. Most of these cases appeared to involve progression of a pre-existing spinal stenosis. It is unknown if CRYSVITA therapy exacerbates spinal stenosis or spinal cord compression.

6.2 Immunogenicity

As with all therapeutic proteins, there is potential for immunogenicity. The detection of antibody formation is highly dependent on the sensitivity and specificity of the assay. Additionally, the observed incidence of antibody (including neutralizing antibody) positivity in an assay may be influenced by several factors including assay methodology, sample handling, timing of sample collection, concomitant medications, and underlying disease. For these reasons, comparison of the incidence of antibodies to burosumab-twza in the studies described below with the incidence of antibodies in other studies or to other products may be misleading.

Pre-existing anti-drug antibodies (ADA) have been detected in up to 10% of patients in clinical studies. ADA was not detected in patients who were antibody negative at the start of treatment. However, the assay used to measure ADA is subject to interference by serum burosumab-twza, possibly resulting in an underestimation of the incidence of antibody formation. Due to the limitation of the assay conditions, the potential clinical impact of antibodies to burosumab-twza is not known.

7 DRUG INTERACTIONS

7.1 Oral Phosphate and Active Vitamin D Analogs

Concomitant use of CRYSVITA with oral phosphate and/or active vitamin D analogs will increase phosphate concentrations greater than expected with CRYSVITA alone. This increase may result in hyperphosphatemia which can induce nephrocalcinosis.

Concomitant use of CRYSVITA with oral phosphate and/or active vitamin D analogs is contraindicated.

8 USE IN SPECIFIC POPULATIONS

8.1 Pregnancy

Risk Summary

There are no available data on CRYSVITA use in pregnant women to inform a drug-associated risk of adverse developmental outcomes. In utero, burosumab-twza exposure in cynomolgus monkeys did not result in teratogenic effects. Adverse effects such as late fetal loss and preterm birth were observed in pregnant cynomolgus monkeys, however, these effects are unlikely to indicate clinical risk because they occurred at a drug exposure that was 64-fold higher, by AUC, than the human

exposure at 1 mg/kg every 4 weeks and were accompanied in the non-XLH monkeys by maternal hyperphosphatemia and placental mineralization (*see Data*). Serum phosphorus levels should be monitored throughout pregnancy [*see Dosage and Administration (2.2)*]. Report pregnancies to the Kyowa Kirin, Inc. Adverse Event reporting line at 1-888-756-8657.

The background risk of major birth defects and miscarriage for the indicated population is unknown; however, the estimated background risk in the U.S. general population of major birth defects is 2% to 4% and of miscarriage is 15% to 20% of clinically recognized pregnancies.

Data

Animal Data

In a reproductive toxicity study in pregnant cynomolgus monkeys without XLH, burosumab-twza was administered intravenously once every two weeks from Day 20 of pregnancy to parturition or cesarean section on Day 133, which includes the period of organogenesis, at doses of 1-, 7- and 64-fold human exposure at the adult human dose of 1 mg/kg every 4 weeks. The treatment did not result in teratogenic effects in fetuses or offspring. An increase in late fetal loss, a shortened gestation period, and an increased incidence of preterm births were observed at 64-fold the human exposure at the adult human dose of 1 mg/kg every 4 weeks, concomitant with maternal hyperphosphatemia and placental mineralization. Burosumab-twza was detected in serum from fetuses indicating transport across the placenta. Hyperphosphatemia but no ectopic mineralization was present in fetuses and offspring of dams exposed to 64-fold human exposure at the 1 mg/kg dose every 4 weeks. Burosumab-twza did not affect pre- and postnatal growth including survivability of the offspring.

8.2 Lactation

Risk Summary

There is no information regarding the presence of burosumab-twza in human milk, or the effects of burosumab-twza on milk production or the breastfed infant. Maternal IgG is present in breast milk. However, the effects of local gastrointestinal exposure and limited systemic exposure to burosumab-twza in the breastfed infant are unknown. The lack of clinical data during lactation precludes a clear determination of the risk of CRYSVITA to an infant during lactation. Therefore, the developmental and health benefits of breastfeeding should be considered along with the mother's clinical need for CRYSVITA and any potential adverse effects on the breastfed infant from CRYSVITA or from the underlying maternal condition.

8.4 Pediatric Use

Safety and effectiveness of CRYSVITA have been established in pediatric patients 6 months and older. Safety and effectiveness in pediatric patients 1 year and older with XLH are based on one phase 3, open-label, active control study [61 patients 1-12 years of age (Study 1)] and two open-label studies [52 patients 5 to 12 years of age (Study 2), and 13 patients 1 to 4 years of age (Study 3)] evaluating serum phosphorus and radiographic findings. Safety and effectiveness in patients 6 months to 1 year and adolescents are supported by evidence from the studies in pediatric patients 1 year to less than 13 years of age with additional modeling and simulation of adult and pediatric pharmacokinetic (PK) and pharmacodynamic (PD) data to inform dosing [*see Adverse Reactions (6.1) and Clinical Studies (14)*].

Safety and effectiveness for CRYSVITA in pediatric patients with XLH below the age of 6 months have not been established.

8.5 Geriatric Use

Clinical studies of CRYSVITA did not include sufficient numbers of patients aged 65 and over to determine whether they respond differently from younger patients. Other reported clinical experience has not identified differences in responses between the elderly and younger patients. In general, dose selection for an elderly patient should be cautious, usually starting at the low end of the dosing range, reflecting the greater frequency of decreased hepatic, renal, or cardiac function, and of concomitant disease or other drug therapy.

8.6 Renal Impairment

The effect of renal impairment on the pharmacokinetics of burosumab-twza is unknown. However, renal impairment can induce abnormal mineral metabolism which will increase phosphate concentrations greater than expected with CRYSVITA alone. This increase may result in hyperphosphatemia which can induce nephrocalcinosis.

CRYSVITA is contraindicated in patients with severe renal impairment, defined as:

- pediatric patients with estimated glomerular filtration rate (eGFR) 15 mL/min/1.73m² to 29 mL/min/1.73m² or end stage renal disease (eGFR < 15 mL/min/1.73m²)
- adult patients with creatinine clearance (CLcr) 15 mL/min to 29 mL/min or end stage renal disease (CLcr < 15 mL/min).

10 OVERDOSAGE

There have been no reports of overdose with CRYSVITA. CRYSVITA has been administered in pediatric clinical trials without dose limiting toxicity using doses up to 2 mg/kg body weight with a maximal dose of 90 mg, administered every two weeks. In adult clinical trials, no dose limiting toxicity has been observed using doses up to 1 mg/kg or a maximal total dose of 128 mg every 4 weeks. In non-XLH rabbits and cynomolgus monkeys, ectopic mineralization in multiple tissues and organs was observed at doses of burosumab-twza that resulted in supra-physiologic serum phosphate levels. Adverse effects on bone including reductions in bone mineral density, bone mineralization and bone strength were also observed at exposure greater than human exposure [see *Nonclinical Toxicology* (13.2)].

In case of overdose, it is recommended that serum phosphorus levels, serum calcium levels and renal function be measured immediately and monitored periodically until resolution to normal/baseline levels. In case of hyperphosphatemia, withhold CRYSVITA and initiate appropriate medical treatment.

11 DESCRIPTION

Burosumab-twza is a human immunoglobulin G subclass 1 (IgG1), anti-human fibroblast growth factor 23 (FGF23) antibody produced by recombinant DNA technology using Chinese hamster ovary cells. Burosumab-twza is composed of two heavy chain (γ 1-chain) molecules and two light chain (κ -chain) molecules. Each heavy chain has an N-linked carbohydrate moiety at asparagine 297 (Asn297). The molecular weight of burosumab-twza determined by mass spectrometry is approximately 147,000.

CRYSVITA (burosumab-twza) injection for subcutaneous administration is supplied as a sterile, preservative-free, clear to slightly opalescent and colorless to pale brown-yellow solution in a single-dose vial.

Each 1 mL of solution contains 10 mg, 20 mg or 30 mg of burosumab-twza, L-histidine (1.55 mg), L-methionine (1.49 mg), polysorbate 80 (0.5 mg), D-sorbitol (45.91 mg) in Water for Injection, USP. Hydrochloric acid may be used to adjust to a pH of 6.25.

12 CLINICAL PHARMACOLOGY

12.1 Mechanism of Action

X-linked hypophosphatemia is caused by excess fibroblast growth factor 23 (FGF23) which suppresses renal tubular phosphate reabsorption and the renal production of 1,25 dihydroxy vitamin D. Burosumab-twza binds to and inhibits the biological activity of FGF23 restoring renal phosphate reabsorption and increasing the serum concentration of 1,25 dihydroxy vitamin D.

12.2 Pharmacodynamics

Following SC administration in XLH patients, higher burosumab-twza concentrations were associated with greater increase of serum phosphorus levels. The increase in serum phosphorus was reversible and returned to baseline with elimination of systemic burosumab-twza.

Ratio of renal tubular maximum reabsorption rate of phosphate to glomerular filtration rate (TmP/GFR) showed dose-dependent increases from baseline [see *Clinical Studies (14)*].

Elevation in serum total FGF23 was observed after initiation of burosumab-twza treatment, however, the clinical implication is unknown.

12.3 Pharmacokinetics

The following pharmacokinetic parameters were observed in patients with XLH administered the approved recommended starting dosage based on a 70 kg patient, unless otherwise specified.

Burosumab-twza exhibited linear pharmacokinetics following SC injections within the dose range of 0.1 to 1 mg/kg (0.08 to 0.8 times the maximum approved recommended dosage based on a 70 kg patient).

The steady-state trough mean (\pm SD) concentration of burosumab-twza was 5.8 (\pm 3.4) mcg/mL in adult patients.

Absorption

The burosumab-twza mean T_{max} values ranged from 8 to 11 days.

Distribution

The apparent volume of distribution of burosumab-twza is 8 L.

Elimination

The apparent clearance is 0.290 L/day. The half-life of burosumab-twza is approximately 19 days.

Metabolism

The exact pathway for burosumab-twza metabolism has not been characterized. Burosumab-twza is expected to be degraded into small peptides and amino acids via catabolic pathways.

Specific Populations

No clinical significant difference in burosumab-twza pharmacokinetics was observed based on age. The effect of renal or hepatic impairment on the pharmacokinetics of burosumab-twza is unknown.

Pediatric Patients

The steady-state trough concentration was 15.8 (\pm 9.4) mcg/mL in patients aged 5-12 years, and 11.2 (\pm 4.6) mcg/mL in patients aged 1-4 years.

Body Weight

Clearance and volume of distribution of burosumab-twza increases with body weight.

Drug Interaction Studies

No drug interaction studies have been conducted with CRYSVITA.

13 NONCLINICAL TOXICOLOGY

13.1 Carcinogenesis, Mutagenesis, Impairment of Fertility

The carcinogenic potential of burosumab-twza has not been evaluated in long term animal studies.

Studies have not been performed to evaluate the mutagenic potential of burosumab-twza.

No specific fertility studies have been performed in animals to evaluate the effects of burosumab-twza.

Toxicology studies with burosumab-twza of up to 40 weeks duration in non-XLH cynomolgus monkeys did not show significant adverse effects on female reproductive organs at doses up to 65-fold human exposure at the dose of 1 mg/kg every 4 weeks. In male monkeys, minimal mineralization of the rete testis or seminiferous tubules associated with hyperphosphatemia was observed at 11- to 37-fold human exposure, but semen analysis did not show any adverse effects.

13.2 Animal Toxicology and/or Pharmacology

In rabbits and cynomolgus monkeys, inhibition of FGF23 signaling by burosumab-twza increased serum phosphate and 1,25 dihydroxy vitamin D. Ectopic mineralization in multiple tissues and organs was observed at doses of burosumab-twza that resulted in supra-physiologic serum phosphate levels in the non-XLH animals. In a study in wild type (WT) and hypophosphatemic Hyp mice, a murine model of XLH, ectopic mineralization was markedly less in Hyp mice.

In adult cynomolgus monkeys, burosumab-twza increased bone turnover, mineral content and/or mineral density and cortical thickness at 37- to 65-fold human exposure at the dose of 1 mg/kg every 4 weeks. Adverse effects on bone including reductions in bone mineral density, bone mineralization and bone strength were observed in adult male monkeys at 37- to 47-fold human exposure at the dose of 1 mg/kg every 4 weeks.

In juvenile cynomolgus monkeys, burosumab-twza increased bone turnover, mineral content and/or mineral density and/or cortical thickness at 0.5- to 5-fold clinical pediatric exposure. Bone mineralization was decreased in a male monkey at 5-fold pediatric exposure but there was no effect on bone strength. Burosumab-twza did not affect bone development in juvenile monkeys at doses up to 5-fold pediatric exposure.

14 CLINICAL STUDIES

14.1 Pediatric X-linked Hypophosphatemia

CRYSVITA has been evaluated in three studies enrolling a total of 126 pediatric patients with XLH.

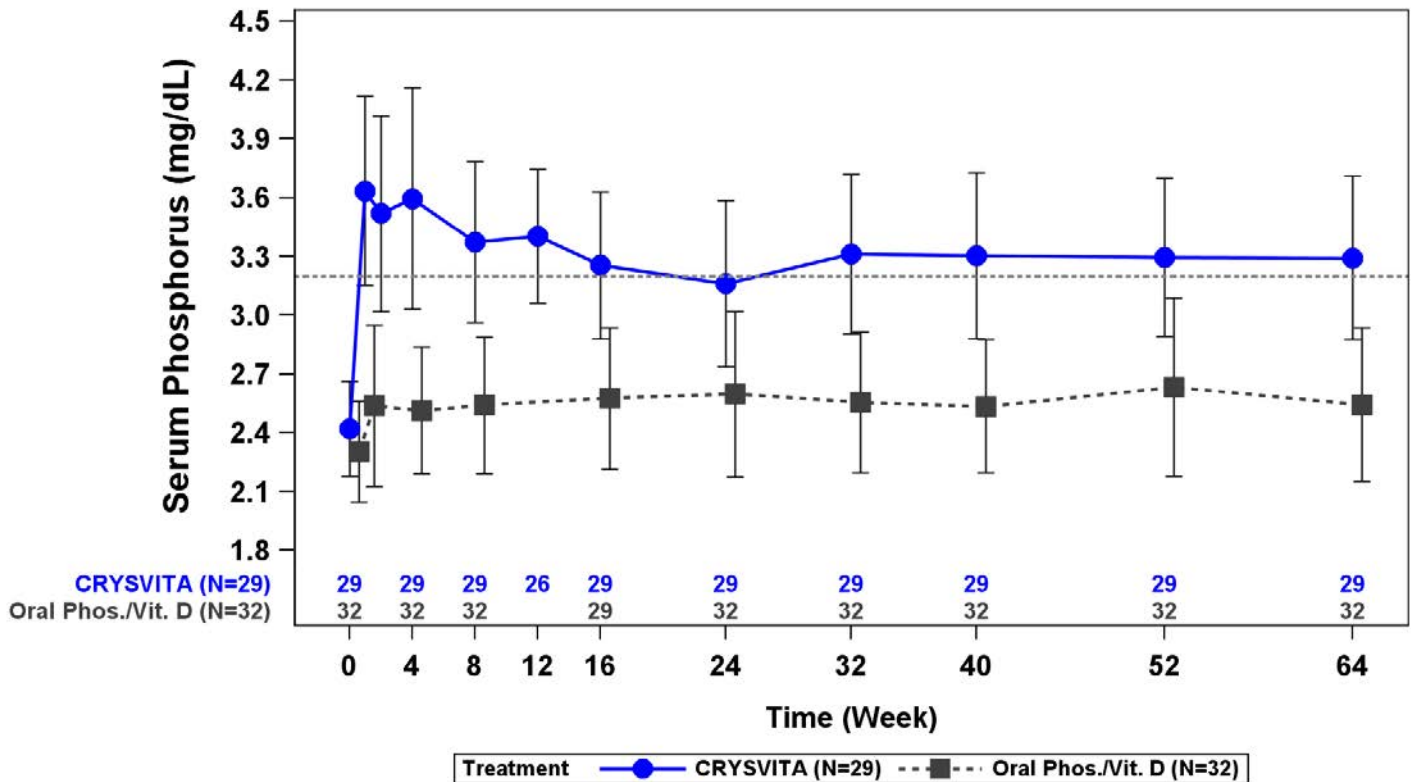
Study 1 (NCT 02915705) is a 64-week randomized, open-label study in 61 pediatric XLH patients, 1 to 12 years old that compared treatment with CRYSVITA to active control (oral phosphate and active vitamin D). At time of first dose the mean age of patients was 6.3 years and 44% were male. All patients had radiographic evidence of rickets at baseline, with an RSS score of ≥ 2.0 and had received oral phosphate and active vitamin D analogs for a mean (SD) duration of 4 (3.1) years. Oral phosphate and active vitamin D analogs were discontinued prior to study enrollment for a 7-day washout period and then reinitiated for patients in the active control group. Patients were randomized to receive either CRYSVITA at a starting dose of 0.8 mg/kg every two weeks or oral phosphate (recommended dose 20-60 mg/kg/day) and active vitamin D (recommended doses calcitriol 20-30 ng/kg/day or alfacalcidol 40-60 ng/kg/day).

Patients randomized to active control received a mean oral phosphate dose of approximately 41 mg/kg/day (range 18 to 110 mg/kg/day) at Week 40 and approximately 46 mg/kg/day (range 18 mg/kg/day to 166 mg/kg/day) at Week 64. They also received either a mean oral calcitriol dose of 26 ng/kg/day at Week 40 and 27 ng/kg/day at Week 64 or a therapeutically equivalent amount of alfacalcidol. Eight patients in the CRYSVITA arm titrated up to 1.2 mg/kg based on serum phosphorus measurements. All patients completed at least 64 weeks on study.

Serum Phosphorus

In Study 1, CRYSVITA increased mean (SD) serum phosphorus levels from 2.4 (0.24) mg/dL at baseline to 3.3 (0.43) mg/dL at Week 40 and to 3.3 (0.42) mg/dL at Week 64. In the active control group, mean (SD) serum phosphorus concentrations increased from 2.3 (0.26) mg/dL at baseline to 2.5 (0.34) mg/dL at Week 40 and to 2.5 (0.39) mg/dL at Week 64. The renal phosphate reabsorptive capacity as assessed by TmP/GFR increased in the CRYSVITA-treated patients from a mean (SD) of 2.2 (0.37) mg/dL at baseline to 3.4 (0.67) mg/dL and 3.3 (0.65) mg/dL at Week 40 and Week 64, respectively. In the active control group, mean (SD) TmP/GFR decreased from 2.0 (0.33) mg/dL at Baseline to 1.8 (0.35) mg/dL at Week 40, and remained below baseline at Week 64 at 1.9 (0.49) mg/dL.

Figure 1: Serum Phosphorus Concentration and Change from Baseline (mg/dL) (Mean ± SD) by Treatment Group in Children 1-12 Years in Study 1



The dotted line represents the lower limit of normal (3.2 mg/dL) for patients in Study 1.

Radiographic Evaluation of Rickets

Radiographs were examined to assess XLH-related rickets using the 10-point Thacher Rickets Severity Score (RSS) and the 7-point Radiographic Global Impression of Change (RGI-C). The RSS score is assigned based on images of the wrist and knee from a single timepoint, with higher scores indicating greater rickets severity. The RGI-C score is assigned based on side-by-side comparisons of wrist and knee radiographs from two timepoints, with higher scores indicating greater improvement in radiographic evidence of rickets. A RGI-C score of +2.0 was defined as radiographic evidence of substantial healing.

In Study 1, baseline mean (SD) total RSS was 3.2 (0.98) in the CRYSVITA group and 3.2 (1.14) in the active control group. After 40 weeks of treatment with CRYSVITA, mean total RSS decreased from 3.2 to 1.1 (0.72) and from 3.2 to 2.5 (1.09) in the active control group. LS mean (SE) RGI-C Global score was +1.9 (0.11) in the CRYSVITA group and +0.8 (0.11) in the active control group at Week 40 (see [Table 7](#)). At Week 40, 21 of the 29 patients in the CRYSVITA group and 2 of the 32 patients in the active control arm achieved a RGI-C global score \geq +2.0. These findings were maintained at Week 64 as shown in [Table 7](#).

Table 7: Rickets Response in Children 1-12 Years Receiving CRYSVITA Every 2 Weeks in Study 1

Endpoint Timepoint	CRYSVITA Every 2 Weeks (N=29)	Active Control (N=32)
RSS Total Score		
Baseline Mean (SD)	3.2 (0.98)	3.2 (1.14)
LS Mean change from baseline in total score ^a (reduction indicates improvement) with 95% CI		
Week 40	-2.0 (-2.33, -1.75)	-0.7 (-0.98, -0.43)
Week 64	-2.2 (-2.46, -2.00)	-1.0 (-1.31, -0.72)
RGI-C Global Score^b		
LS Mean score ^a (positive indicates healing) with 95% CI		
Week 40	+1.9 (+1.70, +2.14)	+0.8 (+0.56, +0.99)
Week 64	+2.06 (+1.91, +2.20)	+1.03 (+0.77, +1.30)

a) The estimates of LS mean and 95% CI for Week 40 are from an ANCOVA model accounting for treatment group, baseline RSS and baseline age stratification factor; the estimates for Week 64 are from a generalized estimating equation (GEE) model accounting for treatment group, visit, treatment by visit interaction, baseline RSS and baseline age stratification factor.

b) RGI-C at Week 40 is the primary endpoint of Study 1

Lower Extremity Skeletal Abnormality

In Study 1, lower extremity skeletal abnormalities were assessed by RGI-C in standing long leg radiographs. At Week 64, the CRYSVITA group maintained greater improvement compared with the active control group (LS mean [SE]: +1.25 [0.17] versus +0.29 [0.12]; difference of +0.97 (95% CI: +0.57, +1.37, GEE model)).

Serum Alkaline Phosphatase Activity

For Study 1, mean (SD) serum total alkaline phosphatase activity decreased from 511 (125) at baseline to 337 (86) U/L in the CRYSVITA group (mean change: -33%) and from 523 (154) at baseline to 495 (182) U/L in the active control group (mean change: -5%) at Week 64.

Growth

In Study 1, CRYSVITA treatment for 64 weeks increased standing mean (SD) height Z score from -2.32 (1.17) at baseline to -2.11 (1.11) at Week 64 (LS mean change (SE) of +0.17 (0.07)). In the active control group, mean (SD) height Z score increased from -2.05 (0.87) at baseline to -2.03 (0.83) at Week 64 (LS mean (SE) change of +0.02 (0.04)). The difference between the treatment groups at Week 64 was +0.14 (95% CI: 0.00, +0.29).

Study 2 (NCT 02163577) is a randomized, open-label study in 52 prepubescent XLH patients, 5 to 12 years old, which compared treatment with CRYSVITA administered every 2 weeks versus every 4 weeks. Following an initial 16-week dose titration phase, patients completed 48-weeks of treatment with CRYSVITA every 2 weeks. All 52 patients completed at least 64 weeks on study; no patient discontinued. Burosumab-twza dose was adjusted to target a fasting serum phosphorus

concentration of 3.5 to 5.0 mg/dL based on the fasting phosphorus level the day of dosing. Twenty-six of 52 patients received CRYSVITA every two weeks up to a maximum dose of 2 mg/kg. The average dose was 0.73 mg/kg (range: 0.3, 1.5) at Week 16, 0.98 mg/kg (range: 0.4, 2.0) at Week 40 and 1.04 mg/kg (range: 0.4, 2.0) at Week 60. The remaining 26 patients received CRYSVITA every four weeks. At study entry, the mean age of patients was 8.5 years and 46% were male. Ninety-six percent had received oral phosphate and active vitamin D analogs for a mean (SD) duration of 7 (2.4) years. Oral phosphate and active vitamin D analogs were discontinued prior to study enrollment. Ninety-four percent of patients had radiographic evidence of rickets at baseline.

Study 3 (NCT 02750618) is a 64-week open-label study in 13 pediatric XLH patients, 1 to 4 years old. Patients received CRYSVITA at a dose of 0.8 mg/kg every two weeks with 3 patients titrating up to 1.2 mg/kg based on serum phosphorus measurements. All patients completed at least 40 weeks on study; no patients discontinued. At study entry, the mean age of patients was 2.9 years and 69% were male. All patients had radiographic evidence of rickets at baseline and 12 patients had received oral phosphate and active vitamin D analogs for a mean (SD) duration of 16.7 (14.4) months. Oral phosphate and active vitamin D analogs were discontinued prior to study enrollment.

Serum Phosphorus

In Study 2, CRYSVITA increased mean (SD) serum phosphorus levels from 2.4 (0.40) at baseline to 3.3 (0.40) and 3.4 (0.45) mg/dL at Week 40 and Week 64 in the patients who received CRYSVITA every 2 weeks. The ratio of renal tubular maximum reabsorption rate of phosphate to glomerular filtration rate (TmP/GFR) increased in these patients from mean (SD) of 2.2 (0.49) at baseline to 3.3 (0.60) and 3.4 (0.53) mg/dL at Week 40 and Week 64.

In Study 3, CRYSVITA increased mean (SD) serum phosphorus levels from 2.5 (0.28) mg/dL at baseline to 3.5 (0.49) mg/dL at Week 40.

Radiographic Evaluation of Rickets

In Study 2, baseline mean (SD) RSS total score was 1.9 (1.17) in patients receiving CRYSVITA every two weeks. After 40 weeks of treatment with CRYSVITA, mean total RSS decreased from 1.9 to 0.8 (see Table 8). After 40 weeks of treatment with CRYSVITA, the mean RGI-C Global score was +1.7 in patients receiving CRYSVITA every two weeks. Eighteen out of 26 patients achieved an RGI-C score of $\geq +2.0$. These findings were maintained at Week 64 as shown in Table 8.

In Study 3, baseline mean (SD) total RSS was 2.9 (1.37) in 13 patients. After 40 weeks of treatment with CRYSVITA, mean total RSS decreased from 2.9 to 1.2 and the mean (SE) RGI-C Global score was +2.3 (0.08) (see Table 8). All 13 patients achieved a RGI-C global score $\geq +2.0$.

Table 8: Rickets Response in Children 1-12 Years Receiving CRYSVITA Every 2 Weeks in Study 2 and Study 3

Endpoint Timepoint	CRYSVITA Every 2 Weeks	
	Study 2 ^a (N=26)	Study 3 ^b (N=13)
RSS Total Score		
Baseline Mean (SD)	1.9 (1.17)	2.9 (1.37)
LS Mean change from baseline in total score (reduction indicates improvement) with 95% CI		

Week 40	-1.1 (-1.28, -0.85)	-1.7 (-2.03, -1.44)
Week 64	-1.0 (-1.2, -0.79)	
RGI-C Global Score		
LS Mean score (positive indicates healing) with 95% CI		
Week 40	+1.7 (+1.48, +1.84)	+2.3 (+2.16, +2.51)
Week 64	+1.6 (+1.34, +1.78)	

- a) The estimates of LS mean and 95% CI are from a generalized estimating equation (GEE) model accounting for regimen, visit, regimen by visit interaction, baseline RSS for study 2.
- b) The estimates of LS mean and 95% CI for Week 40 are from an ANCOVA model accounting for age and baseline RSS for study 3.

Lower Extremity Skeletal Abnormality

In Study 3, the mean (SE) change in lower limb deformity as assessed by RGI-C, using standing long leg radiographs, was +1.3 (0.14) at Week 40.

Serum Alkaline Phosphatase Activity

For Study 2, mean (SD) serum total alkaline phosphatase activity was 462 (110) U/L at baseline and decreased to 354 (73) U/L at Week 64 (-23%) in the patients who received CRYSVITA every 2 weeks.

For Study 3, mean (SD) serum total alkaline phosphatase activity was 549 (194) U/L at baseline and decreased to 335 (88) U/L at Week 40 (mean change: -36%).

Growth

In Study 2, CRYSVITA treatment for 64 weeks increased standing mean (SD) height Z score from -1.72 (1.03) at baseline to -1.54 (1.13) in the patients who received CRYSVITA every two weeks (LS mean change of +0.19 (95% CI: 0.09 to 0.29)).

14.2 Adult X-linked Hypophosphatemia

Study 4 (NCT 02526160) is a randomized, double-blind, placebo-controlled study in 134 adult XLH patients. The study comprises a 24-week placebo-controlled treatment phase followed by a 24-week open-label treatment period in which all patients received CRYSVITA. CRYSVITA was administered at a dose of 1 mg/kg every 4 weeks. At study entry, the mean age of patients was 40 years (range 19 to 66 years) and 35% were male. All patients had skeletal pain associated with XLH/osteomalacia at baseline. The baseline mean (SD) serum phosphorus concentration was below the lower limit of normal at 1.98 (0.31) mg/dL. Oral phosphate and active vitamin D analogs were not allowed during the study. Out of the 134 patients enrolled in the study, one patient in the CRYSVITA group discontinued treatment during the 24-week placebo-controlled treatment period, and 7 patients discontinued CRYSVITA during the open-label treatment period.

Study 5 (NCT 02537431) is a 48-week, open-label, single-arm study in 14 adult XLH patients to assess the effects of CRYSVITA on improvement of osteomalacia as determined by histologic and histomorphometric evaluation of iliac crest bone biopsies. Patients received 1 mg/kg CRYSVITA

every four weeks. At study entry, the mean age of patients was 40 years (range 25 to 52 years) and 43% were male. Oral phosphate and active vitamin D analogs were not allowed during the study.

Serum Phosphorus

In Study 4 at baseline, mean (SD) serum phosphorus was 1.9 (0.32) and 2.0 (0.30) mg/dL in the placebo and CRYSVITA groups respectively. During the initial 24-week double-blind, placebo-controlled period, mean (SD) serum phosphorus across the midpoints of dose intervals (2 weeks post dose) was 2.1 (0.30) and 3.2 (0.53) mg/dL in the placebo and CRYSVITA groups, and mean (SD) serum phosphorus across the ends of dose intervals was 2.0 (0.30) and 2.7 (0.45) mg/dL in the placebo and CRYSVITA groups.

A total of 94% of patients treated with CRYSVITA achieved a serum phosphorus level above the lower limit of normal (LLN) compared to 8% in the placebo group through Week 24 (see Table 9).

Table 9: Proportion of Adult Patients Achieving Mean Serum Phosphorus Levels Above the LLN at the Midpoint of the Dose Interval During the 24-Week Placebo-Controlled Period of Study 4

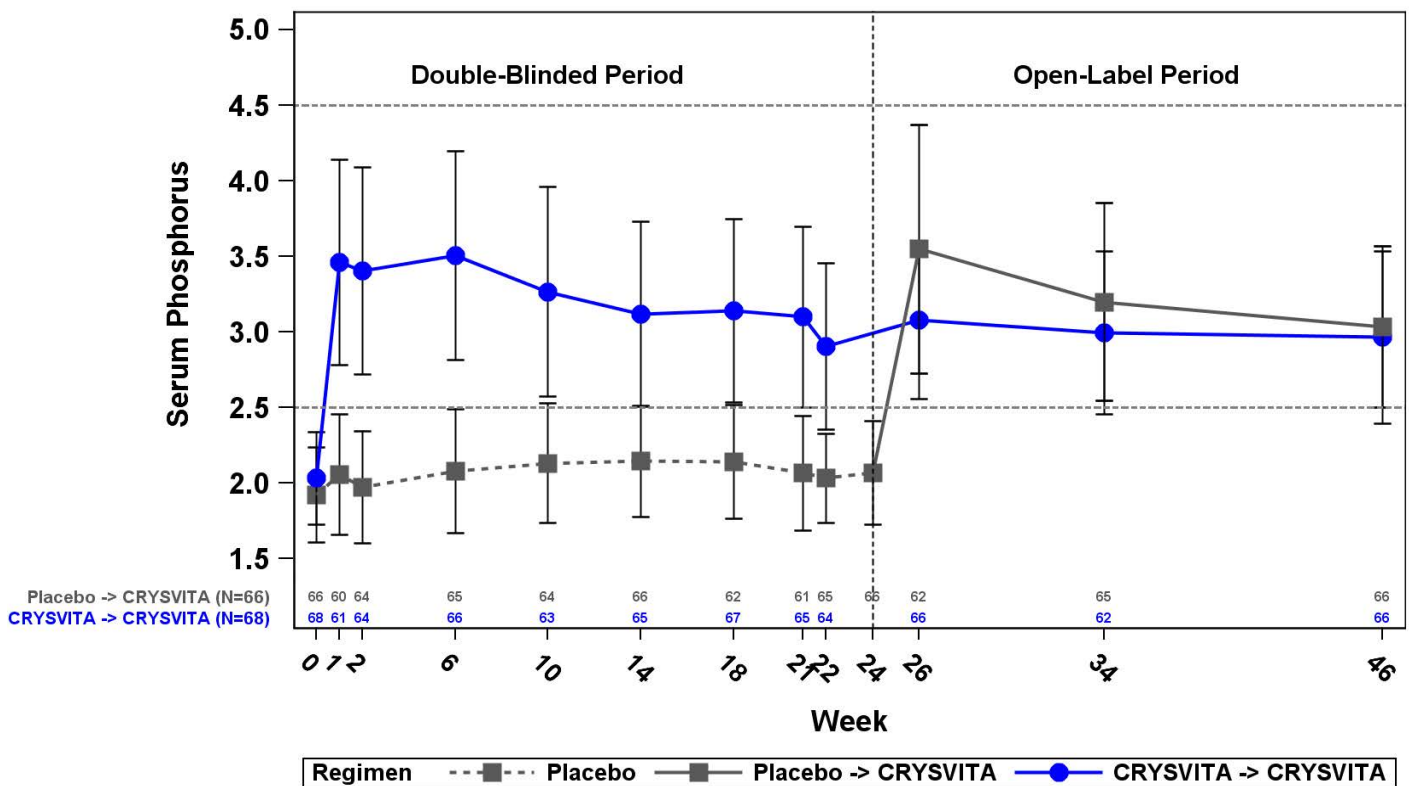
	Placebo (N = 66)	CRYSVITA (N = 68)
Achieved Mean Serum Phosphorus > LLN Across Midpoints of Dose Intervals Through Week 24 - n (%)	5 (8%)	64 (94%)
95% CI	(3.3, 16.5)	(85.8, 97.7)
p-value ^a		< 0.0001

The 95% CIs are calculated using the Wilson score method.

^a P-value is from Cochran-Mantel-Haenszel (CMH) testing for association between achieving the primary endpoint and treatment group, adjusting for randomization stratifications.

During the open-label treatment period, serum phosphorus was maintained during continued CRYSVITA therapy, with no evidence of loss of effect through Week 48.

Figure 2: Mean (\pm SD) Serum Phosphorus Peak Concentrations (mg/dL) in Study 4^{a,b}



- a. Placebo subjects cross over to receive open-label CRYSVITA treatment at Week 24
- b. The dotted lines represent the upper limit of normal (4.5 mg/dL) and lower limit of normal (2.5 mg/dL) for patients in Study 4

At baseline, the mean (SD) ratio of renal tubular maximum reabsorption rate of phosphate to glomerular filtration rate (TmP/GFR) was 1.60 (0.37) and 1.68 (0.40) mg/dL in the placebo and CRYSVITA groups respectively. At Week 22 (midpoint of a dose interval), mean (SD) TmP/GFR was 1.69 (0.37) and 2.73 (0.75) mg/dL in the placebo and CRYSVITA groups. At Week 24 (end of a dose interval), mean (SD) TmP/GFR was 1.73 (0.42) and 2.21 (0.48) mg/dL in the placebo and CRYSVITA groups. During the open-label treatment period, TmP/GFR remained stable during continued CRYSVITA therapy through Week 48.

Radiographic Evaluation of Osteomalacia

In Study 4, a skeletal survey was conducted at baseline to identify osteomalacia-related fractures and pseudofractures. Osteomalacia-related fractures are defined as atraumatic lucencies extending across both bone cortices and pseudofractures are defined as atraumatic lucencies extending across one cortex. There were 52% of patients who had either active (unhealed) fractures (12%) or active pseudofractures (47%) at baseline. The active fractures and pseudofractures were predominantly located in the femurs, tibia/fibula, and metatarsals of the feet. Assessment of these active fracture/pseudofracture sites at Week 24 demonstrated a higher rate of complete healing in the CRYSVITA group compared to placebo as shown in Table 10. During the double-blind, placebo-controlled treatment period through Week 24, a total of 6 new fractures or pseudofractures appeared in 68 patients receiving CRYSVITA, compared to 8 new abnormalities in 66 patients receiving placebo (see Table 10).

Table 10: Comparison of Fracture Healing with CRYSVITA vs Placebo in Study 4 Double Blind Period

	Active Fractures		Active Pseudofractures		Total Fractures	
	Placebo n (%)	CRYSVITA n (%)	Placebo n (%)	CRYSVITA n (%)	Placebo n (%)	CRYSVITA n (%)
No. of fractures at baseline	13	14	78	51	91	65
Healed at Week 24	0 (0%)	7 (50%)	7 (9%)	21 (41%)	7 (8%)	28 (43%)

During the open-label treatment period, the patients who continued receiving CRYSVITA showed continued healing of fractures at Week 48 [active fractures (n = 8, 57%), active pseudofractures (n = 33, 65%)]. In the 'placebo to CRYSVITA' group, fracture healing at Week 48 was observed for active fractures (n = 6, 46%), and active pseudofractures (n = 26, 33%).

Patient Reported Outcomes

Study 4 evaluated patient-reported XLH-related symptoms (pain, joint stiffness, and physical function).

At 24 weeks, the CRYSVITA arm showed a mean improvement from baseline (-7.9) compared to the placebo arm (+0.3) in the stiffness severity score (range 0 to 100; lower scores are reflective of symptom improvement).

At 24 weeks, no significant difference between CRYSVITA and placebo was demonstrated in patient-reported pain intensity or physical function score.

Bone Histomorphometry

In Study 5, after 48 weeks of treatment, healing of osteomalacia was observed in ten patients as demonstrated by decreases in Osteoid volume/Bone volume (OV/BV) from a mean (SD) score of 26% (12.4) at baseline to 11% (6.5), a change of -57%. Osteoid thickness (O.Th) declined in eleven patients from a mean (SD) of 17 (4.1) micrometers to 12 (3.1) micrometers, a change of -33%. Mineralization lag time (MLt) declined in 6 patients from a mean (SD) of 594 (675) days to 156 (77) days, a mean change of -74%.

16 HOW SUPPLIED/STORAGE AND HANDLING

CRYSVITA (burosumab-twza) injection for subcutaneous administration is supplied as a sterile, preservative-free, clear to slightly opalescent and colorless to pale brown-yellow solution. The product is available as one single-dose vial per carton in the following strengths:

10 mg/mL (NDC# 69794-102-01)

20 mg/mL (NDC# 69794-203-01)

30 mg/mL (NDC# 69794-304-01)

CRYSVITA vials must be stored in the original carton until the time of use under refrigerated conditions at 36°F to 46°F (2°C to 8°C). Keep CRYSVITA vial in the original carton to protect from light until time of use.

Do not freeze or shake CRYSVITA.

Do not use CRYSVITA beyond the expiration date stamped on the carton.

CRYSVITA vials are single-dose only. Discard any unused product.

17 PATIENT COUNSELING INFORMATION

Drug Interactions

Advise patients not to use any oral phosphate and/or active vitamin D analog products [see *Contraindications (4)*].

Hypersensitivity Reactions

Advise patients that CRYSVITA may cause hypersensitivity events such as rash, injection site rash and urticaria. Instruct the patients to contact their physician if such reactions occur [see *Adverse Reactions (6.1)*].

Injection Site Reactions

Inform patients that injection site reactions (e.g. erythema, rash, swelling, bruising, pain, pruritus, urticaria, and hematoma) have occurred at the site of CRYSVITA injection. Instruct the patients to contact their physician if such reactions occur [see *Adverse Reactions (6.1)*].

Restless Leg Syndrome

Advise patients that CRYSVITA can induce RLS or worsen the symptoms of existing RLS. Instruct the patients to contact their physician if such a reaction occurs [see *Adverse Reactions (6.1)*].

Pregnancy

Report pregnancies to the Kyowa Kirin, Inc. Adverse Event reporting line at 1-888-756-8657 [see *Use in Specific Populations (8.1)*].

Manufactured by:
Kyowa Kirin, Inc.
Bedminster, NJ 07921
U.S. License No. 2077

Distributed by:
Ultragenyx Pharmaceutical Inc.
Novato, CA 94949 USA